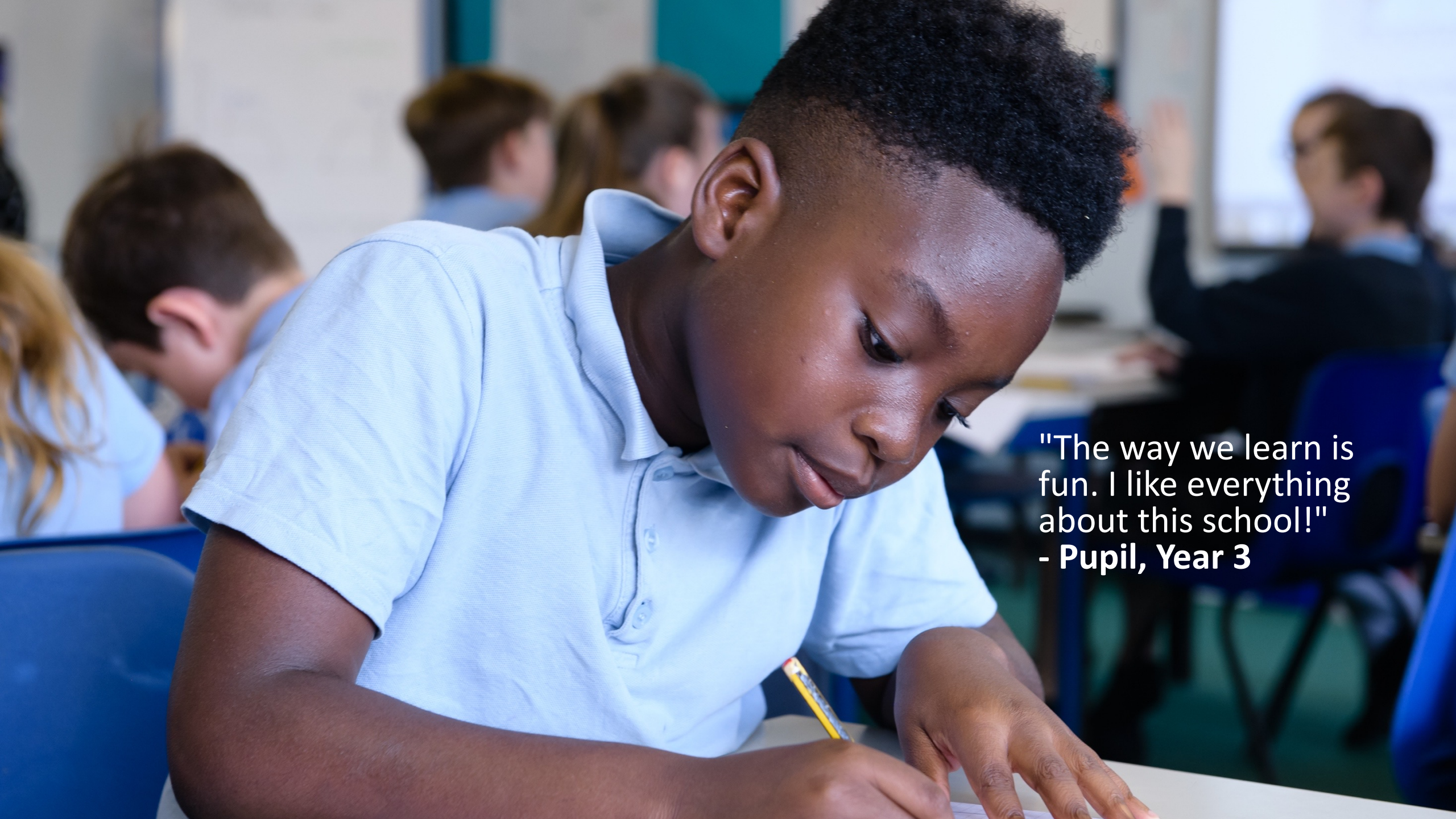




# Fairview Prospectus







"The way we learn is fun. I like everything about this school!"  
- Pupil, Year 3



# Welcome

Fairview Community Primary School is a values based learning community, committed to the education of the whole child. We strive to achieve high academic standards for all children and believe this is best achieved through teaching that is engaging, innovative and personalised to individual needs.

We are proud of our inclusive and caring school. We aim to develop values and learning dispositions with the children that will prepare them for an exciting future. Our children are enthusiastic, motivated, independent learners and they are well-rounded and happy.

We have a dedicated team that strives for the very best in everything we do. We pride ourselves on providing the highest quality learning experiences. Education is a partnership between home and school and parents are active partners and valued highly.

**Karin Tillet, Headteacher**







"We are very grateful for all the opportunities that the school provides. Staff have the children's best interests at heart - nothing is ever too much trouble."  
- Parents



# Our Values

At Fairview, our school values underpin everything we do and are core to the ethos of our school. Our aim is to develop a community of **responsible** learners who not only demonstrate **collaboration** and **perseverance** in their work, but who also show **kindness**, **respect** and **honesty** towards one another.



"Pupils behave well and speak respectfully to adults and each other. They take pride in their work and are keen to do well." - **Ofsted 2019**

We work together with parents and carers to provide positive role models that support children's learning and social development. All our staff know the children very well and develop a culture where children feel safe and are confident to take risks. We have high expectations for all and plan learning contexts that enable all learners to feel respected and challenged. Our learning is planned to support the development of good social relationships through shared activities, peer tutoring, cooperative learning, and acknowledging the accomplishments and cultures of all learners. Children are at the centre of all that we do and take an active role in the day-to-day leadership and organisation of the school. By developing confidence and a deep understanding of our values, children can skilfully support each other through collaboration. Children feel emotionally and physically safe at Fairview because of our clear commitment to the values that underpin effective and enabling relationships.







Our children enjoy outstanding learning environments.





# At Fairview we celebrate Diversity!



What is  
your  
heritage?

One school, many cultures!

## Protected Characteristics

It is **against the law** to  
discriminate against these **9**  
characteristics



Fairview Community Primary School is  
committed to being a safe and welcoming  
place, showing support and solidarity for all,  
staff, students and visitors, inline with the  
Equality Act protected characteristics.



# Learning together

At Fairview, we have highly committed staff, who see themselves as learners too. We provide the best quality teaching for every child in every class, every day.



"High-quality texts are used effectively throughout the school to capture pupils' interest and engagement with books. These extend pupils' vocabulary and deepen their understanding of how authors write for different purposes and audiences." - **Ofsted 2019**

We believe children learn best when they are immersed in meaningful learning opportunities, which extend their natural curiosity and inspire creativity thinking. We work together to ensure that children develop into effective and enthusiastic learners with the skills, attitudes and dispositions that are vital for future growth and success. All classrooms are dialogic, where discussion supports children's thinking; encouraging and supporting children to think deeply, ask questions, develop resilience, justify opinions and reason logically. We believe that all children should achieve highly. Learning in the classroom, displays and in books is of a high quality. Teachers are focused on ensuring that all children secure the skills that are necessary for learners to achieve and develop into confident individuals. We are committed to ensuring that our children are equipped with the skills needed for the next stage of their education.





# INTRODUCING...Our School Dog Lenny

Here to help with:

Anxiety reduction

Communication and  
social anxieties

Attachment and relationship building

Stress coping strategies

Attention and behavioural difficulties

Desensitisation and problem solving

Social interaction  
and relationships

Studies have found that children with companion animals have higher self-esteem, greater empathy, more engagement with peers and other prosocial behaviour.

When I was  
a puppy



The Dog Mentor programme has built upon the benefits of the human-animal bond by providing children positive experiences with dogs that can help them educationally, developmentally, emotionally and socially.

My training  
day with The  
Dog Mentor

**THE DOG MENTOR**  
BUILDING CHARACTERS





"It is a pleasure  
working in a school  
with such a great  
community spirit  
where children are so  
enthusiastic and  
eager to learn."  
- Early Years Teacher





# Learning for all

Fairview is an inclusive school, meeting the needs of a diverse range of learners. We are committed to removing barriers that might otherwise prevent a child from flourishing.

We recognise that some children and their families face personal challenges and have a dedicated team of staff to support their learning; we work closely with external specialists and are committed to providing additional learning support that is precise and planned to support children with their specific learning needs. At Fairview, we foster inclusive learning environments where all children can engage in shared experiences, dialogue, practical tasks and enquiry based learning; making learning an active and exciting process where questioning and independent thinking skills are positively encouraged. Our Inclusion team includes a Learning Mentor, Family Support Manager and Specialist Dyslexia & Speech and Language Teaching Assistants. We also have two specialist provisions, Ocean Room and Rainforest Room, a Sensory Circuits room and a fully equipped Sensory Room. We work alongside a fully trained Counsellor and a Specialist Dyslexia teacher.



"Teachers and teaching assistants work effectively together to support all groups of pupils, including disadvantaged."  
- **Ofsted 2019**







# Exploring the world outside

We are committed to learning outside of the classroom. Our beautiful grounds and outdoor spaces provide children with opportunities to interact with and learn in engaging environments.

Our children learn to work collaboratively, take responsibility, risk assess and be safe, explore new challenges, apply learning in new and challenging contexts and develop resilience. Our outdoor provision includes our EYFS outdoor provision, dedicated growing spaces and our thriving onsite forest school. We also view the internet as part of the wider world and support children in developing skills for safe and effective use of digital technologies.





# Forest School

Forest School is an inspirational process, that offers all learners opportunities to achieve and develop confidence and self-esteem through hands-on learning experiences in a woodland or natural environment. All activities have been risk assessed we have a specialist teacher who has been fully trained to run Forest School.

It is a great place for bonding with classmates, sharing new experiences, being creative and great for Physical Development, Personal, Social and Emotional Development and a place to explore and care for our environment.

Throughout this academic year, all our children, from nursery to year 6, will take part in Forest School sessions.







"Forest school is an amazing opportunity for children to ignite their curiosity and develop life skills in a safe, yet exciting environment."  
- **Mrs Donovan,**  
**Forest School Leader**



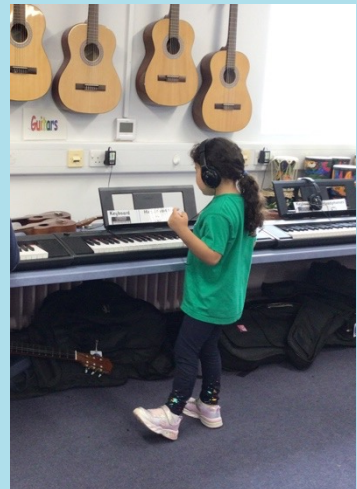


# Music at Fairview



At Fairview, every child is a musician. There are no limits to what a child can achieve and become, musically, at Fairview.

We offer class music lesson provision, a designated music room, quantity and quality of instruments per child, instrumental tuition offer, and extra-curricular music are second to none. Over two hundred children at Fairview engage in weekly extra-curricular music, and all children also have one hour a week's specialist, practical, class music lesson with me, Mrs Gutsell-Thompson, Specialist Music Teacher.



“Having worked in over forty primary schools throughout Medway, and taught music for over thirty years, in various local authorities, much of this as a Head of Music in Secondary education, I can testify that Fairview is, still, quite categorically, the best-appointed school I have worked in”  
- **Mrs Gutsell-Thompson,**  
**Specialist Music Teacher**



# Sport at Fairview

At Fairview children participate in at least 2 sports lessons a week, ranging from gymnastics, hockey, Quidditch, dancing to name but a few.

We are incredibly fortunate to have a specialist PE teacher, Mrs Saputo, who solely teaches sport.

From year 3 upwards, children engage in swimming lessons at Medway Park.

Our children compete in Sports Festivals, Mini Youth Games and Mini Leagues for hockey, football and cross-country racing. Every child takes part in the 'Fairview Mile' run once a week. We also link with local community clubs to provide specialist coaching during lunch and in after school clubs.

We celebrate sport at the end of the year with our parents at a whole school sports day and picnic.





# Confident citizens

We recognise and nurture the strengths our community brings to the school, celebrating and valuing the rich cultural heritage of our families and the unique contributions of individuals from all experiences, cultures and backgrounds.

Through local and international partnerships, we provide extensive opportunities for children to develop an understanding of their local community as well as the wider international community we are part of. In doing this, we aim to develop confident and responsible citizens who share responsibility for developing a sustainable world built on justice and mutual respect.



"Fairview teachers are nurturing, caring and passionate about the children. My daughter loves coming to school and is making amazing progress."

- Parent





# Educational visits

Each year group takes part in topical workshops, and we also take the children on educational visits. Previous trips last year included visiting the Imperial War Museum, The Historic Dockyard – Chatham, Wingham Wildlife Park, Sevenoaks Wildlife Reserve, Leeds Castle, Wildwood & Kent Life.

Our year 6 children can attend an adventure residential week at one of the PGL resorts, where they get the opportunity to take part in a vast selection of activities. It is an excellent opportunity for the children to develop their confidence and self-reliance in preparation for their transfer to secondary school, as well as to set themselves targets and achieve personal challenges.





# Do you need advice or support for your family?



**We're here to help!**

**Our Family Support Manager also offers support in school with:**

- **Second hand uniform**
- **Phone calls and appointments**
- **Paperwork and form filling**
- **Support around children's attendance**
- **Behaviour and parenting advice**
- **Signposting to services for additional support**
- **1-1 Emotional well being work with children**
- **Working closely with the SEN Team**
- **Parent Workshops**

## Services our Family Support Manager can help with

### **Medway Family Solutions**

-preventative early intervention support with group intervention, parenting programs and / or 1:1 support to children and young people from pre- birth - 19 and their families.

### **Medway Food Bank -**

Emergency food packages to support people in crisis.

### **TOaST (Therapeutic Outreach and Support Team)**

- A new pilot team to support children and young people aged 5 to 25 displaying emotional and behavioural distress, but who do not meet the criteria for other support.

### **Gillingham Street Angels**

- Supporting and helping the homeless and anyone in need, no matter the reason.

**DWP** - 2 allocated workers within Medway who can support parents within school to ensure they are accessing all relevant benefits.

### **Medway Housing Service -**

Kent Home Choice

**Young Carers** - A project to support young people aged 5-18 who are in a caring role.

### **Oasis domestic abuse services**

- A charity that helps adults, children and young people to build a safe, positive future free from home.

### **One Stop Shop**

- Sunlight Centre Gillingham. Domestic Abuse One Stop Shops offer free advice, information and support from a range of agencies.

### **Family Action**

- Small Steps - support and advice for families whose children are either pre or post diagnosis of Autism and/or ADHD.

For more information please contact Danielle Hind (FSM) by email: [office@fairviewprimary.medway.sch.uk](mailto:office@fairviewprimary.medway.sch.uk)



