



# Fairview Community Primary School

## Termly Newsletter

### Year 4 - Term 6

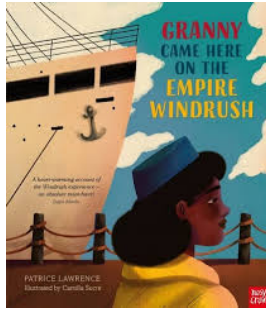
At Fairview, our school values underpin everything we do and are core to the ethos of our school. Our aim is to develop a community of **responsible** learners who not only demonstrate **collaboration** and **perseverance** in their work, but who also show **kindness**, **respect** and **honesty** towards one another.

Welcome back for the start of Term 6! From all of us on the Year 4 team, we hope you had a lovely half term. This term, we are excited to be continuing our learning in Geography as we consider our critical questions **'Where does our food come from?'** Below, you will find an overview of our curriculum and what we will be learning in each subject this term. If you have any questions, please contact your child's class teacher. We would like to thank you for your continued support and engagement with your child's learning.

*Mr Lewis, Mrs Harvey and Mrs Costen*

#### English

Our English work will be working from a book called 'Granny came here on the Windrush.'



#### Maths

Our focus this term will be to finish off the Year 4 curriculum before completing some revision of the topics which have been most challenging this year, the topics we will initially focus on will be properties of shapes and Geometry and revision may include a variety of topics. Our focus as a team is to best prepare the children for the Year 5 maths curriculum during the summer term.

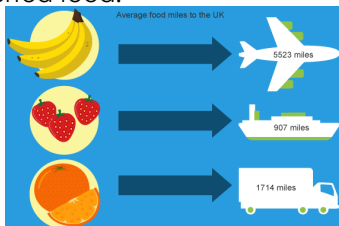
#### Science

We will be completing our 'Animals and their habitats' unit of learning. This will initially begin with different classification of creatures before briefly learning about the impact humans are having on the environment in which we and animals live.



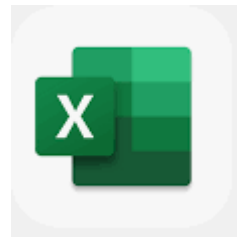
#### Geography

We will be trying to answer the question 'Where does our food come from?'. We will consider how our food choices can impact the environment and whether it is better to buy local or imported food.



#### Computing

Our focus this term will be working on spreadsheets and music making. Using programmes like Microsoft Excel and also the Purple Mash software, the children will learn how to edit spreadsheets and create simple formulae.



#### Design and technology

Our focus this term will be cooking. We will be learning how to adapt a recipe to suit different audiences. We will taste and make biscuits as well as designing packaging and doing market research to see if our adaptations are successful.



#### RE

This term we are focussing on Christianity and the question 'Do people need to go to church to show that they are a Christian?' This learning will hopefully lead to the children questioning their own thoughts on a range of topics.

#### PE

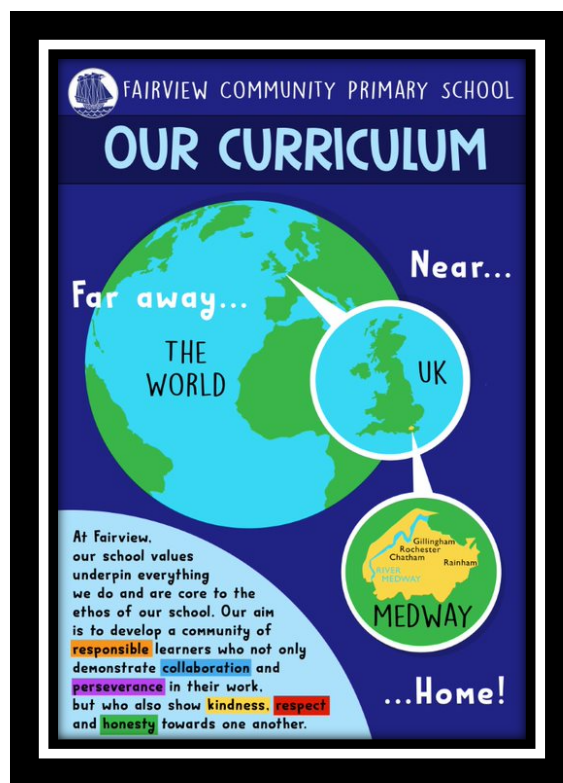
This term Dolphins, Otters and Turtles will be completing lessons in both rounders and athletics this term, hoping to get outside as much as possible. This is with a particular focus on Sports Day practise.



#### PSHE

Our topic this term is SRE. Children will be undertaking learning related to the National Curriculum about this subject area. If you have any specific questions about this, please feel free to ask.





## PE Days

	Odd week (PPA)	Even Weeks
Otters	Thursday and Friday	Tuesday and Friday
Dolphins	Wednesday and Thursday	
Turtles	Tuesday and Thursday	

## Home Learning

<b><u>Reading</u></b>	<b><u>Times tables</u></b>	<b><u>Spelling</u></b>
<p>Reading is a vital skill and children who enjoy reading for fun are more likely to read for enjoyment throughout their lives. They are also more likely to develop a lifelong love of reading which will help them in all areas of life.</p> <p>Each child's Reading Record, will be checked weekly by their class teacher or teaching assistant. If your child reads four or more times within a seven-day period, they will receive a 'reading raffle ticket' which will be placed into a box for their phase group</p>	<p>Times Tables are a huge part of learning in KS2, they impact on many other aspects of maths such as fractions and division. Please use TT Rock Stars regularly to improve accuracy and speed of recall. We will set challenges and battles as part of maths home learning. The battles will now run from Friday to Friday.</p> <p>There are also fun games at:  <a href="https://mathsframe.co.uk/en/resources/category/22/most-popular">mathsframe.co.uk/en/resources/category/22/most-popular</a></p>	<p>Please login into Spelling Shed to find the weekly spellings. These will appear on a Friday.</p> <p>Take some time talking about what they mean and saying or writing them in a sentence. If your child has a Nesso login please can they focus on this instead of spelling shed.</p> <p>We will not be testing spellings but will reward those who complete spelling shed with dojos and those who have completed the most will receive a certificate in assembly.</p>

